

Customer Care and Maintenance

**This Care and Maintenance manual is your guide to ensure the longevity
of your Comar Aluminium Folding Sliding Door**

Your Fabricator has installed the following products in your building:

Comar 7Pi Folding/Sliding

The name of your Fabricator and contact is:

Fibretech Fabrications Ltd
Unit E, St Cleer Business Park
St Cleer, Liskeard
Cornwall PL14 6EQ
Telephone: 01579 349953

Email: sales@fibretechfabrications.com Website: www.fibretech-fabrications.co.uk

Company Number: 9845785

Registered Office: Fibretech Fabrications Ltd

Unit E, St Cleer Business Park

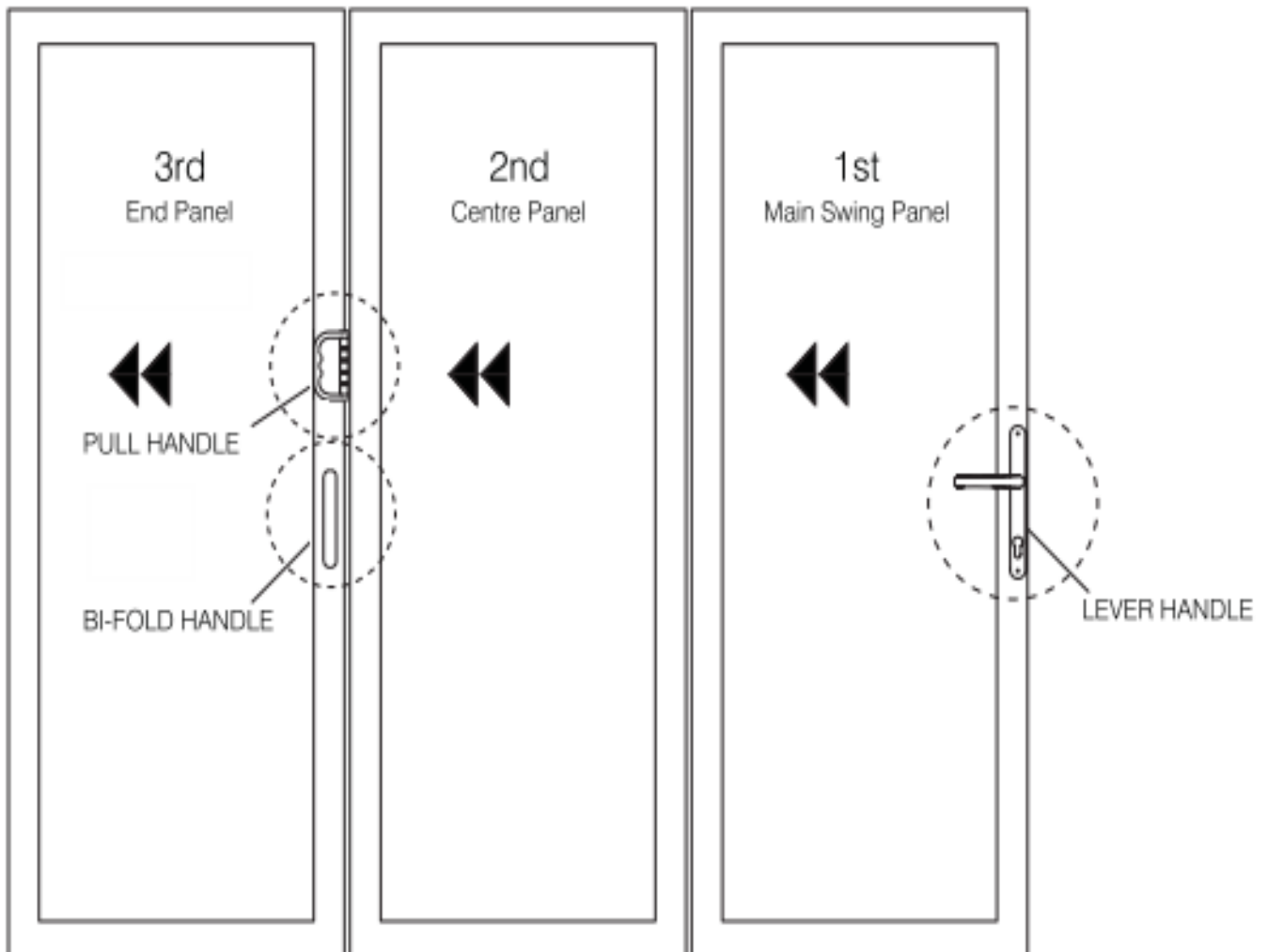
St Cleer

Liskeard

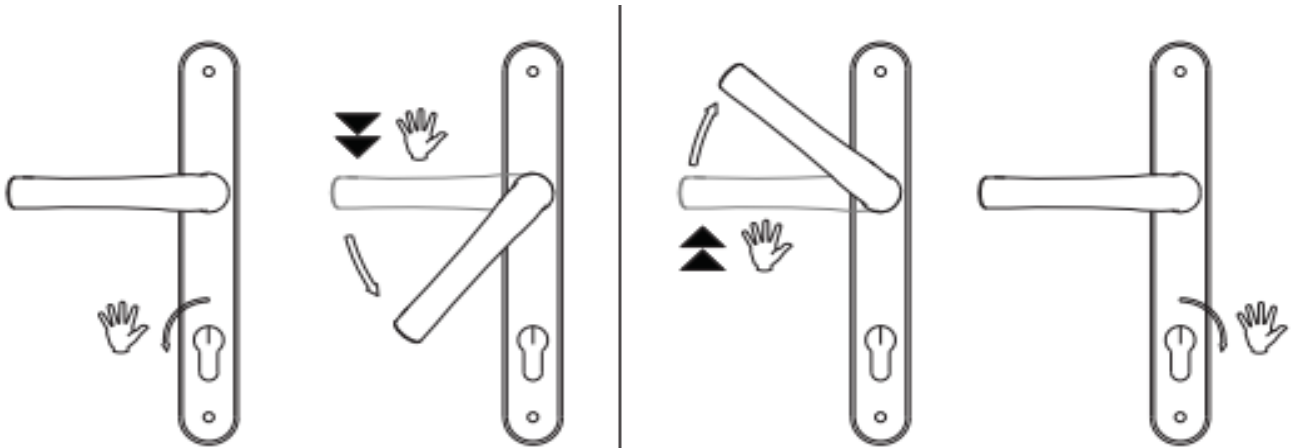
Cornwall PL14 6EQ

Left Hand Stacking Outward Opening

**** Important: Remove Keys Prior to Folding Open****



How to Operate the Lever Handle



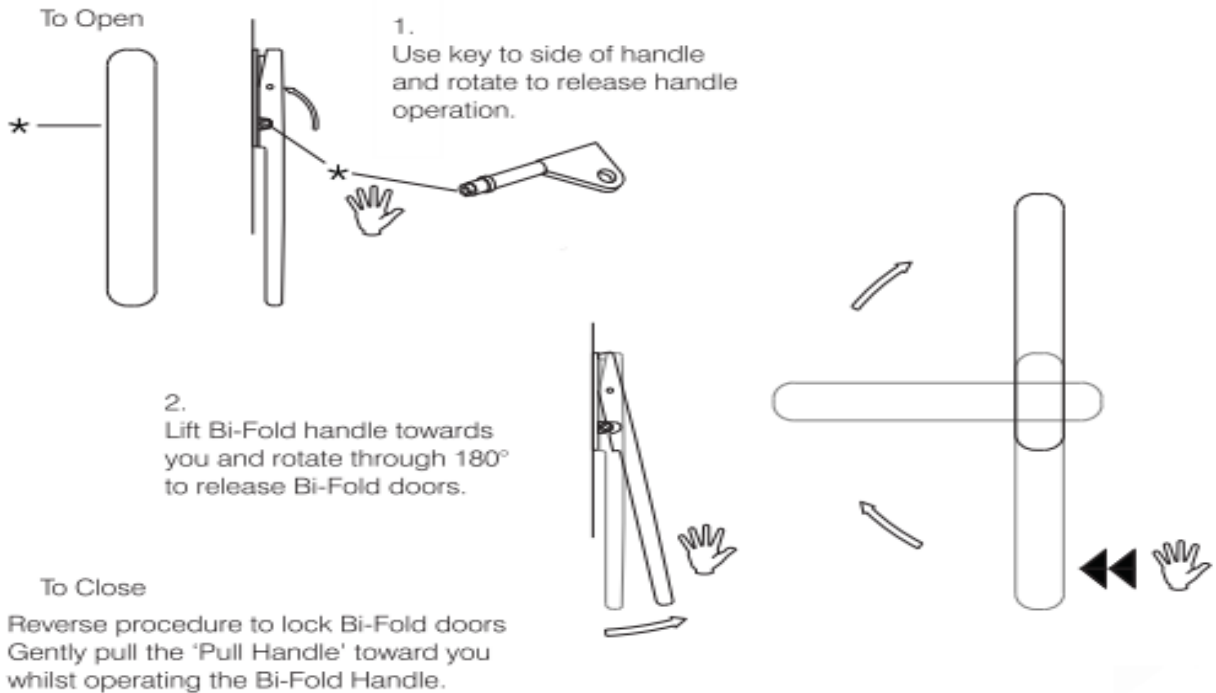
1. To Unlock
Use key to release
Handle operation.

2. To Open
Rotate handle to retract
locks and push door
Open.

3. To Close.
Pull door into frame
and rotate handle to
Engage locks.

4. To Lock
Use key to prevent
handle operation.

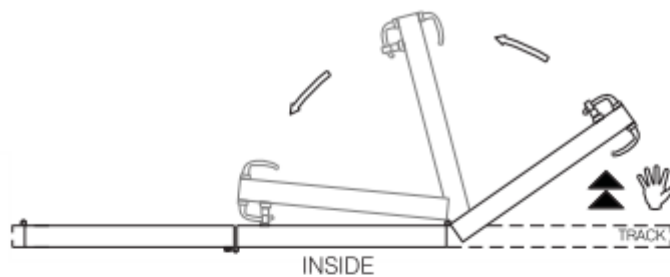
How to Operate the Bi-Fold Handle



How to Open

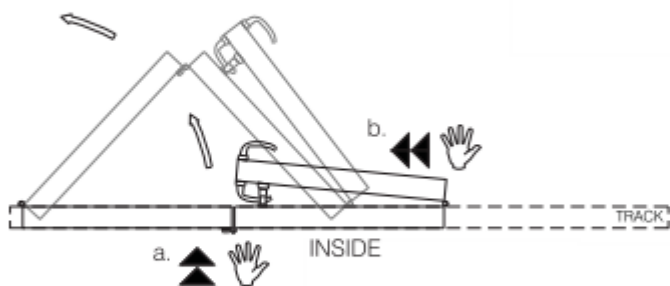
Left Hand Stacking Outward Opening

****Remove Keys Prior to Folding Open****



STAGE 1

Main Swing Panel opens first. Ensure that it is fully open.



STAGE 2

a. Push to collapse out.
b. Push from roller side to control door.



STAGE 3

Fully open position.

How to Close

Reverse procedure above.

- Hold main swing panel and centre panel and pull in direction of the track.
- Use pull handle attached to hinge (above Bi-Fold handle) to pull panel in-line with track before operating Bi-Fold Handle
- Close and secure the main swing panel.

Cleaning

Glass:

****NOTE: GLASS IS EASILY SCRATCHED. ENSURE CLOTHS ARE FREE OF DIRT AND GRIT BEFORE CLEANAING. REMOVE JEWELLERY BEFORE CLEANING. ****

- External grime to be removed with soap and water.
- Cleaner should not run onto any other surface, as it may damage the materials.
- Household glass cleaner should be used with a soft, clean cloth.

Door Frames & Panels

****NOTE: AVOID ALL ABRASIVE OR SOLVENT BASED CLEANERS.AVOID ALL SILICONE POINTING SEALANTS****

Wash panels and frames with diluted soapy water:

- a) At Least every 3 months in areas of industry, heavy traffic or near sea
- b) At least every 6 months in rural areas

If necessary, use a soft cloth and non-abrasive cleaner that is suitable for plastic, aluminium or timber.

ANY DAMAGE TO THE PAINT COATING SUCH AS ABRASIONS, CHIPS AND SCRATCHES MUST BE REPAIRED IMMEDIATELY.

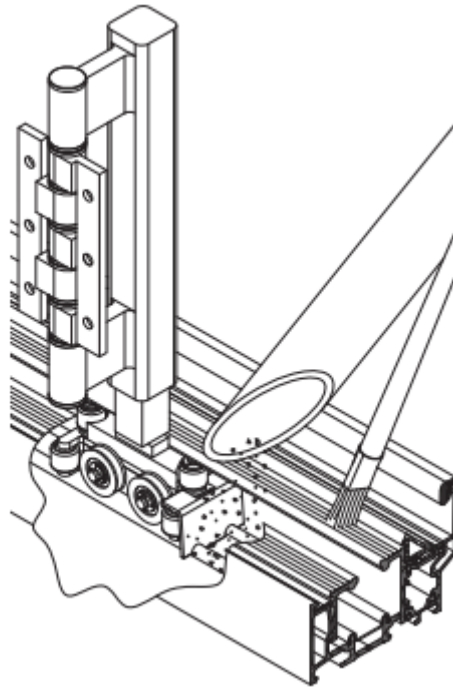
In the event of unusually heavy staining, you are advised to seek advise from your fabricator named on the front cover.

Tracks

****TRACKS MUST BE KEPT CLEAR AND CLEAN AT ALL TIMES****

- Dust and dirt can build up on the roller mechanism and prevent the door from running smoothly.
- To clean the tracks, use a long, nylon-bristled (non-metallic) brush and a vacuum with a narrow nozzle.

****DO NOT APPLY LUBRICANT TO THE TRACK. ****



Rollers

****OILS ALL HINGES AND HINGE PINS WITH TEFLON SPRAY OR A LIIGHTWEIGHT LUBRICANT OIL****

- Thoroughly clean and dry all upper and lower rollers and hinges every 3 to 6 months.
- Apply a generous amount of non-greasy lubricant; such as Teflon spray, to the wheels and bearings on the rollers-but avoiding the track.

**** A QUALIFIED TECHNICIAN MUST CARRY OUT ALL ADJUSTMENT AND REPLACEMENTS****

Maintenance

Glass Scratches

**** REPLACEMENT OF SEALED UNITS MUST BE CARRIED OUT BY A PROFESSIONAL IN ACCORDANCE TO BS6262. UNITS MUST COMPLY WITH BS EN 1279****

If scratches occur, most can be removed with a polishing compound such as 'jewellery rouge' - supplied by local glass supplier.

Alternatively, seek professional advice.

Gaskets

****NOTE: AVOID ALL ABRASIVE OR SOLVENT BASED CLEANERS. AVOID ALL SILICONE POINTING SEALANTS****

- If gaskets are damaged or broken and draughts are felt around the unit, contact the fabricator on the front cover, our team will promptly organise a replacement.
- To clean, use a non-abrasive cloth and light soapy solution. DO NOT USE solvent based cleaning products on the gaskets.
- Annually apply a silicone spray to the gaskets.

Hardware Fittings

- Thoroughly clean and dry all upper and lower rollers and hinges every 3 to 6 months.
- Apply a generous amount of non-greasy lubricant; such as Teflon spray, to the wheels and bearings on the rollers.
- Oil all hinges and hinge pins with lightweight lubricant oil or Teflon spray. Wipe away any excess with non-abrasive cloth once finished.

Handles

No Maintenance required

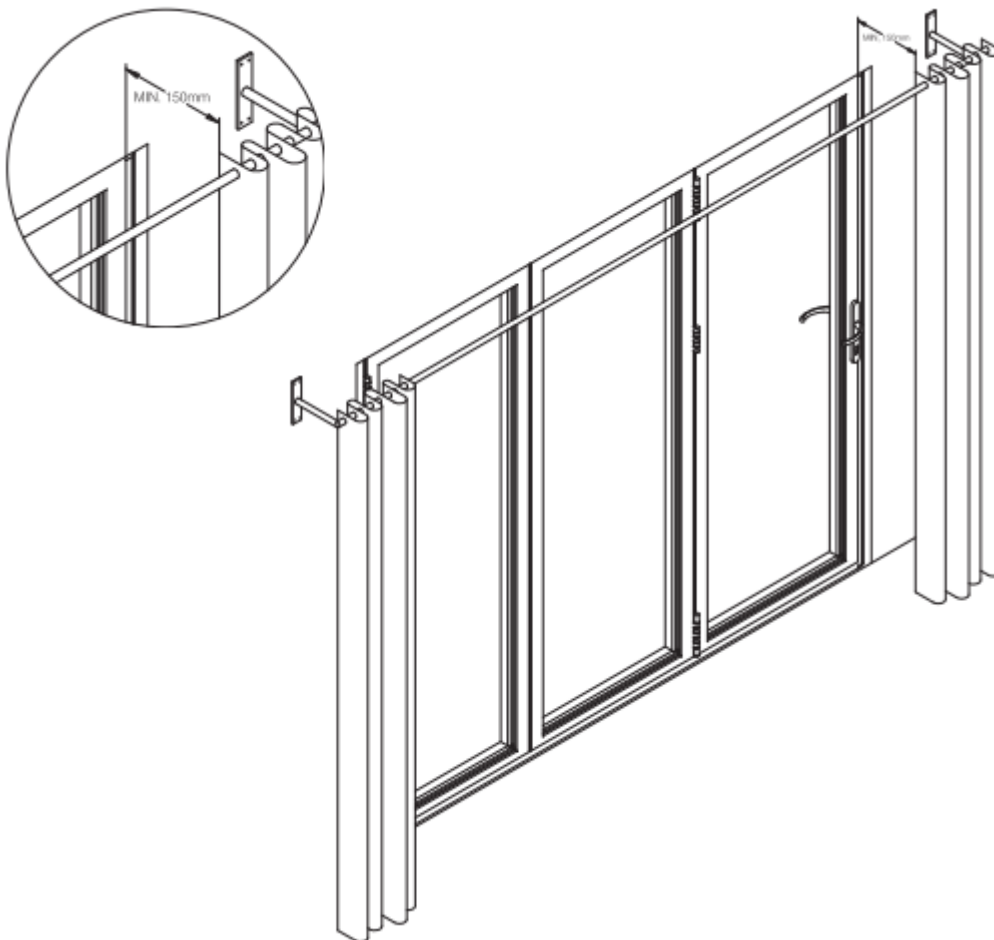
Silicone Seals

****NOTE: SOME DISCOLOURATION OF THE SILICONE POINTING SEALANT IS A NATURAL OCCURRENCE AND CANNOT BE AVOIDED. ****

Condensation

Solutions

- Position any curtains at least 150mm from the glazing to allow room temperature to reach windows.
- Avoid glazed or non-absorbent wall coating where possible.
- It is recommended that wall vents are used if flues are blocked off.
- Open windows each day for a short period to allow for air change.



Kitchen

- Use extractor fans.
- Close doorways to the rest of the house and keep a window open.