



COMAR7P.i FSDX

Comar: British by Design

comar 7P.i FSDX

The next generation of aluminium bi-fold, folding sliding door has arrived. FSDX: offering the eXtra-factor to fabricators and installers alike. Superior, stabilised rolling action with the quietest roller in the industry and improved weight bearing capacity means fit-once and reduced call-outs. The new outer-frame is one profile and is used for the track and jambs reducing stock-holding. It is a mitre frame construction with 2 crimping options: pinned cleats for creating pre-assembled outer frames that can be shipped to site or mechanical cleats which means the outer-frame can be shipped to assemble on site – a key consideration when larger door sets are to be installed.



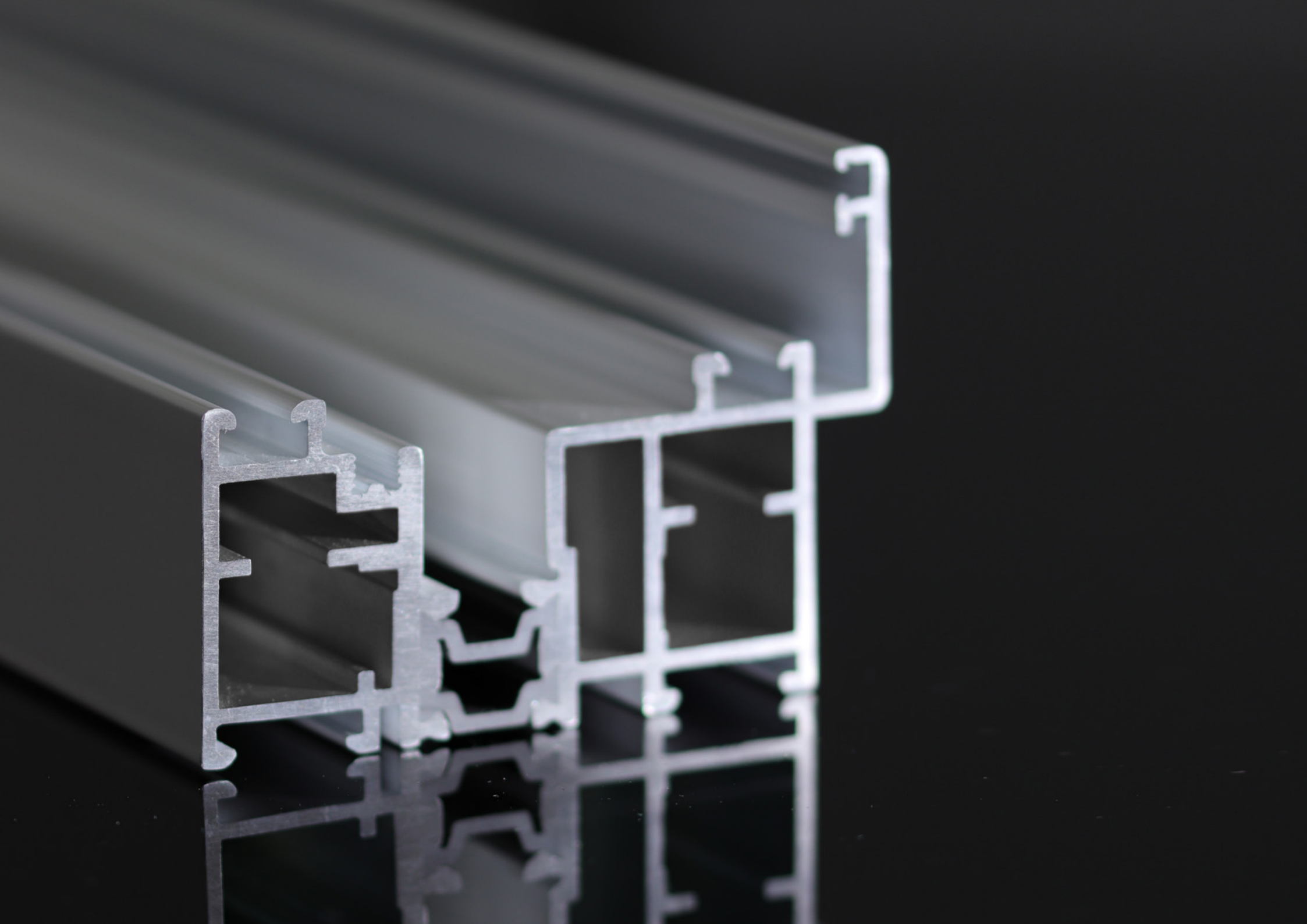
FSDX eXtra Roller

The stainless steel dual roller seamlessly integrates with the stainless steel running track, with a stabiliser the wheels always remain in contact with the track, which, means that even if the track is slightly mis-aligned due to building tolerances the smooth rolling action is not hindered. The weight bearing capacity is increased to 120Kg which with the FSDX's glazing pocket of 62mm triple glazed or acoustic glass can easily be incorporated.



FSDX eXtra Track

Superior thermal performance with integrated stainless-steel rail means that low U-values and continued performance are guaranteed. The intelligent design of the profile means the same profile is used for the jambs and the head, providing mitre frame construction and two options for site transport – preassembled or stick using pinned crimped cleats or mechanical cleats.



FSDX eXtra Hinges

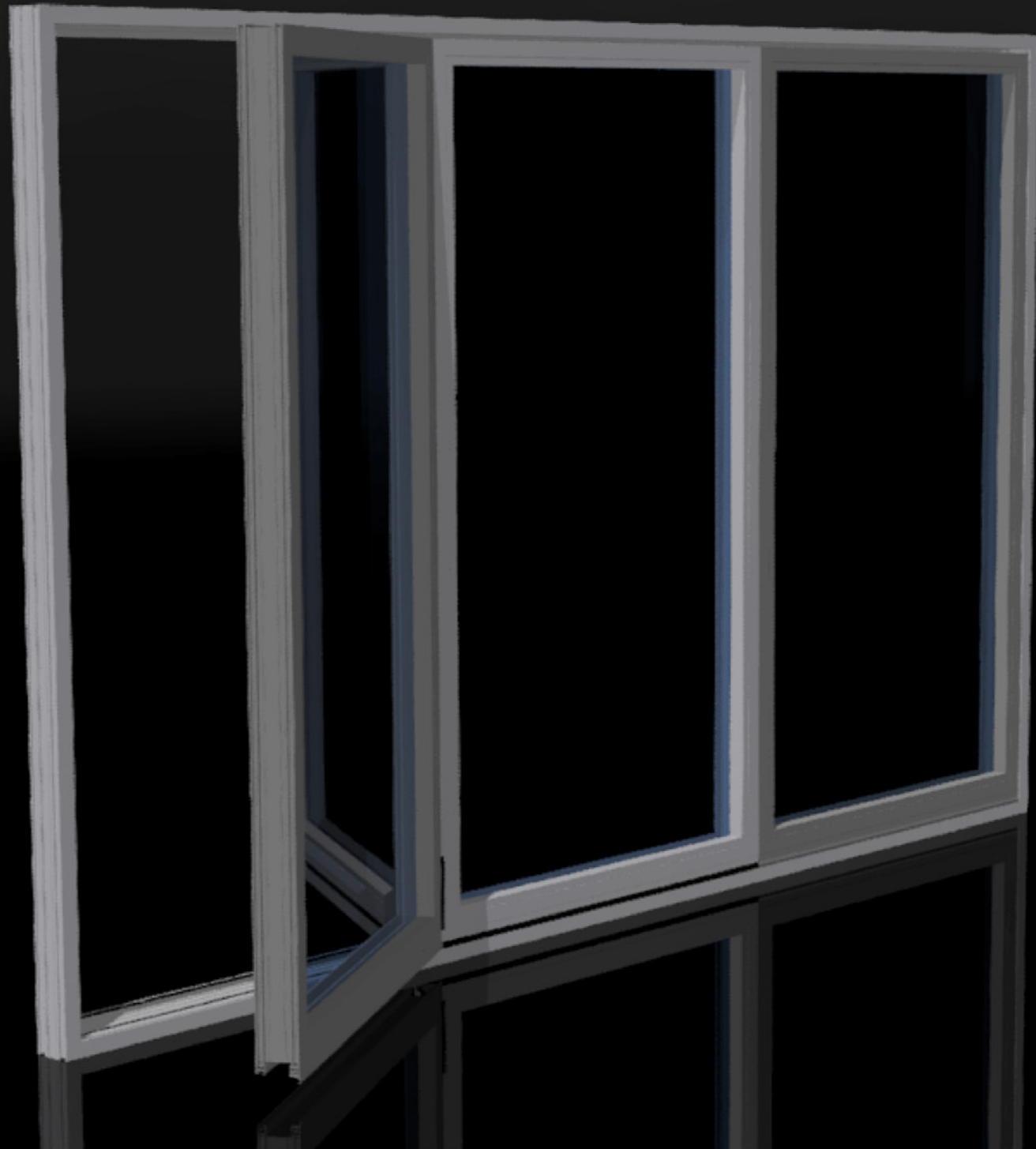
The new hinge design incorporates a central gasket strip, which actively reduces hinge gasket prep and site installation. Even the roller pillar has been treated with consideration and pre-applied foam pads seal the roller to the door. This increases home-owner satisfaction with a draft-free solution and no call backs for the installer. Adequate sealing between the sliding doors ensures that a long-term solution is guaranteed.

FSDX eXtra Glazing

The view out of the FSDX door offers the homeowner that little bit eXtra. With the slimmest sightlines available of 60mm, the doors maximise daylighting into the home. Maximising glazing without lacking performance the maximum width of the doors has been increased allowing doorsets to be over 4M with only 3 doors.

FSDX eXtra Incentive

To support our installer and fabrication partner FSDX offers the eXtra incentive of FOC FSDX material for your showroom which we will Polyester Powder Coat to Marine Grade in any colour to suit your showroom colours. Please contact your Comar Business Development Manager for further information.



comar 7P.i Aluminium Door Series

The Comar 7P.i Series of aluminium door systems offers the fabricator a range of solutions to suit the requirements of your customers. For economical solutions select rebated single or double door options from our ECO range, for a cost-effective solution with a variety of door configurations the Comar 7P.i offers bi-fold, rebated, tilt/slide, lift/slide, patio sliding and commercial swing doors. For a future proof solution with superior thermal break technology the Comar 9P.i single or double rebated doors will take fabricators through even the most demanding next round of Document L, offering U-values as low as 0.9.

A range of tooling packages are available to suit each of the door systems. The tooling is comprehensive and is designed to maximise productivity and reduce defect levels in fabrication. Estimating software is covered with our V6 Genesis software which offers full estimating as well as a range of production reports.

Comar Architectural aluminium Systems is part of TPG, The Parkside Group Limited, based in Surrey and is celebrating over 50 years in business. For our long-standing fabrication partners our history ensures that your business has the reassurance of a UK Independent company which has evolved through the years to now deliver the best of British to the industry.

From our UK Headquarters Comar supplies aluminium window, curtain walling, window walling, doors and ground floor framing systems to a nationwide network of Approved Fabricators. The business was built on delivery and we carry market leading stock at our HQ, of over £6M in profiles and accessories. To put this in perspective the stock holding, ready for call off, is the equivalent of 3 rugby pitches with aluminium stacked in five layers. This means that fabricators can order mill or white profiles and get them on their next twice weekly delivery. For Just-in-Time solutions our fabricators

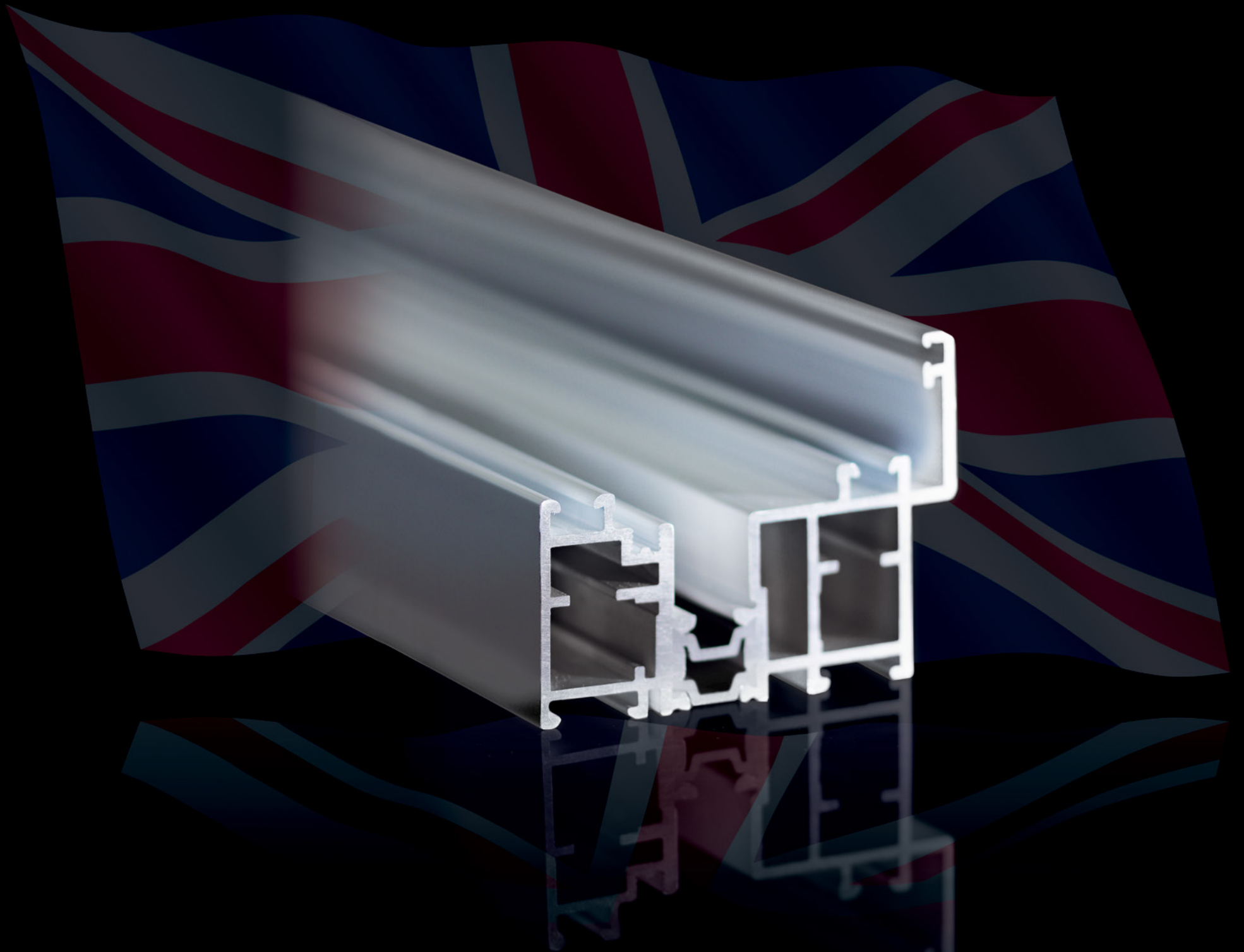
can pick up from our HQ and there is an extensive carrier service available at the end of the phone.

We offer Polyester Powder Coating or Anodising solutions as part of the service and due to our close relationships with our suppliers and unrivalled stock holding we can offer dual colour options faster than our competition. All our finishers are Qualicoat registered and we can offer Chromate free paints should they be requested.

The support does not end there. With a team of Project and Business Development Managers we can offer a guaranteed flow of projects and Comar Specified Projects to suit your business needs. Training and site liaison is covered with a team of experienced Technical Engineers that can offer classroom, site or workshop training to suit your staff.

All the best Team Comar

comar 7P.i FSDX
British Engineering



Technical Back-Up

An experienced team covers the UK while the Technical Department offers an unsurpassed design and installation advice service to designers, specifiers and fabricators; simply call: +44 (0)20 8685 9685

For More Information

To find out more about this or any other Comar Architectural Aluminium System, or to obtain your personal copies of the Comar Technical Manuals call: +44 (0)20 8685 9685 or fax on: +44 (0)20 8646 5096

Comar Architectural Aluminium Systems

TPG - The Parkside Group Ltd
The Willow Centre
17 Willow Lane, Mitcham
Surrey CR4 4NX

T: +44 (0)20 8685 9685

F: +44 (0)20 8646 5096

E: projects@parksidegroup.co.uk

www.comar-alu.co.uk

05.19

